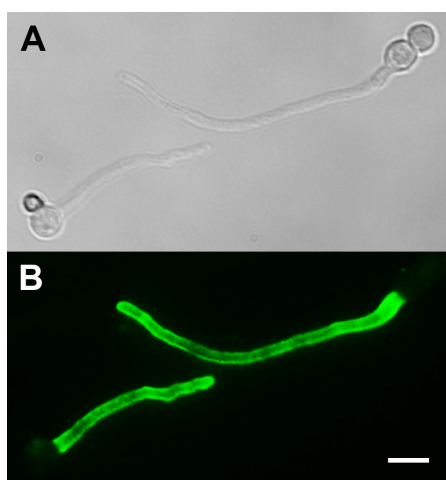


Aspergillus, mouse monoclonal antibody [clone JF5]

Product code	ID2505-0025 / ID2505-0100
Unit size	25µL / 100µL
Concentration	See batch specific Certificate of Analysis
Alternative name	No
Clone	JF5
Host	Mouse
Antigen	50 to >200kDa mannoprotein
Isotype	IgG3
Purification	Protein A
Applications	ELISA, WB, IF, IEM
Recommended dilution	1:1000
Optimisation	Optimal dilutions to be determined by end user
Species reactivity	<i>Aspergillus</i> and <i>Penicillium</i> species
Storage buffer	Phosphate buffered saline pH7.2 with 0.095% (w/v) sodium azide
Shipping	Blue ice
Storage temperature	Store as supplied at +2°C ~ +8°C for up to 1 year
Reference	Rolle, A-M, Hasenberg M, Thornton CR, <i>et al.</i> (2016). Immuno-PET/MR imaging allows specific detection of <i>Aspergillus fumigatus</i> lung infection <i>in vivo</i> . <i>Proceedings of the National Academy of Sciences of USA</i> 113 : 1026-1033.



Legend: Immunofluorescence (IF) microscopy showing binding of mAb JF5 to hyphae of *Aspergillus fumigatus*. (A). Brightfield image showing ungerminated spores and germinated spores with developing hyphae. (B) The cells were probed with mAb JF5 followed by goat anti-mouse FITC conjugate and examined under epifluorescence. Bar = 6µm. Note intense fluorescence on surface of hyphae, but lack of staining of spore cell wall.

UNLESS OTHERWISE STATED IN OUR CATALOG OR OTHER COMPANY DOCUMENTATION ACCOMPANYING THE PRODUCT(S), OUR PRODUCTS ARE INTENDED FOR **RESEARCH USE ONLY** (RUO) AND ARE NOT TO BE USED FOR ANY OTHER PURPOSE, WHICH INCLUDES, BUT IS NOT LIMITED TO, UNAUTHORISED COMMERCIAL USES, *IN VITRO* DIAGNOSTIC USES, *EX VIVO* OR *IN VIVO* THERAPEUTIC USES OR ANY TYPE OF CONSUMPTION OR APPLICATION TO HUMANS OR ANIMALS.